

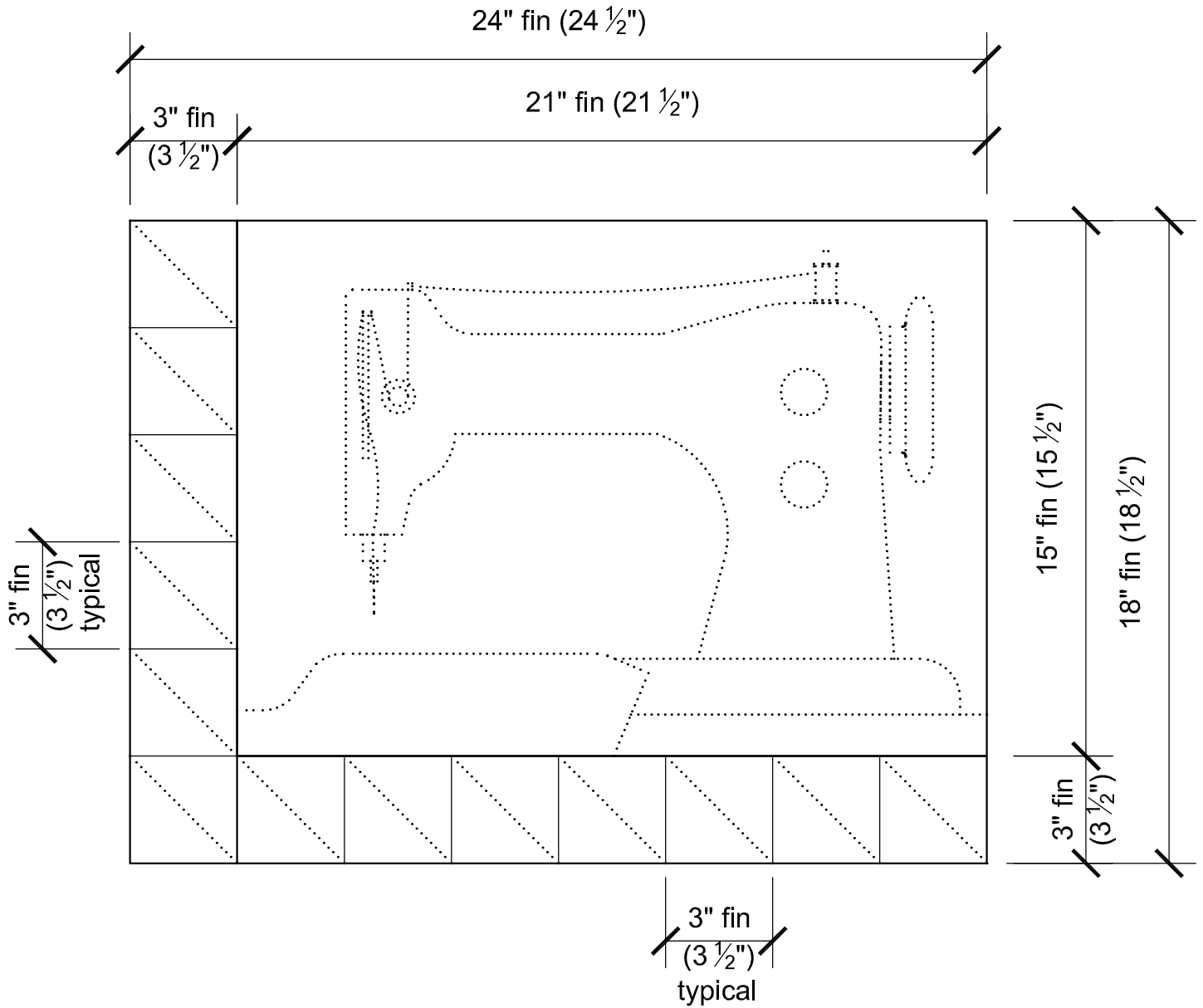
BOM MYSTERY QUILT 2019-2020

Month #8 - June

LARGE

Part 1 - Sewing Machine block - 21" W x 15" H - finished (21 1/2" x 15 1/2" unfinished)

Part 2 - Half square triangles - Each half square triangle is 3" x 3" finished (3 1/2" x 3 1/2" unfinished)



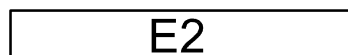
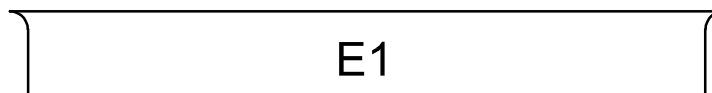
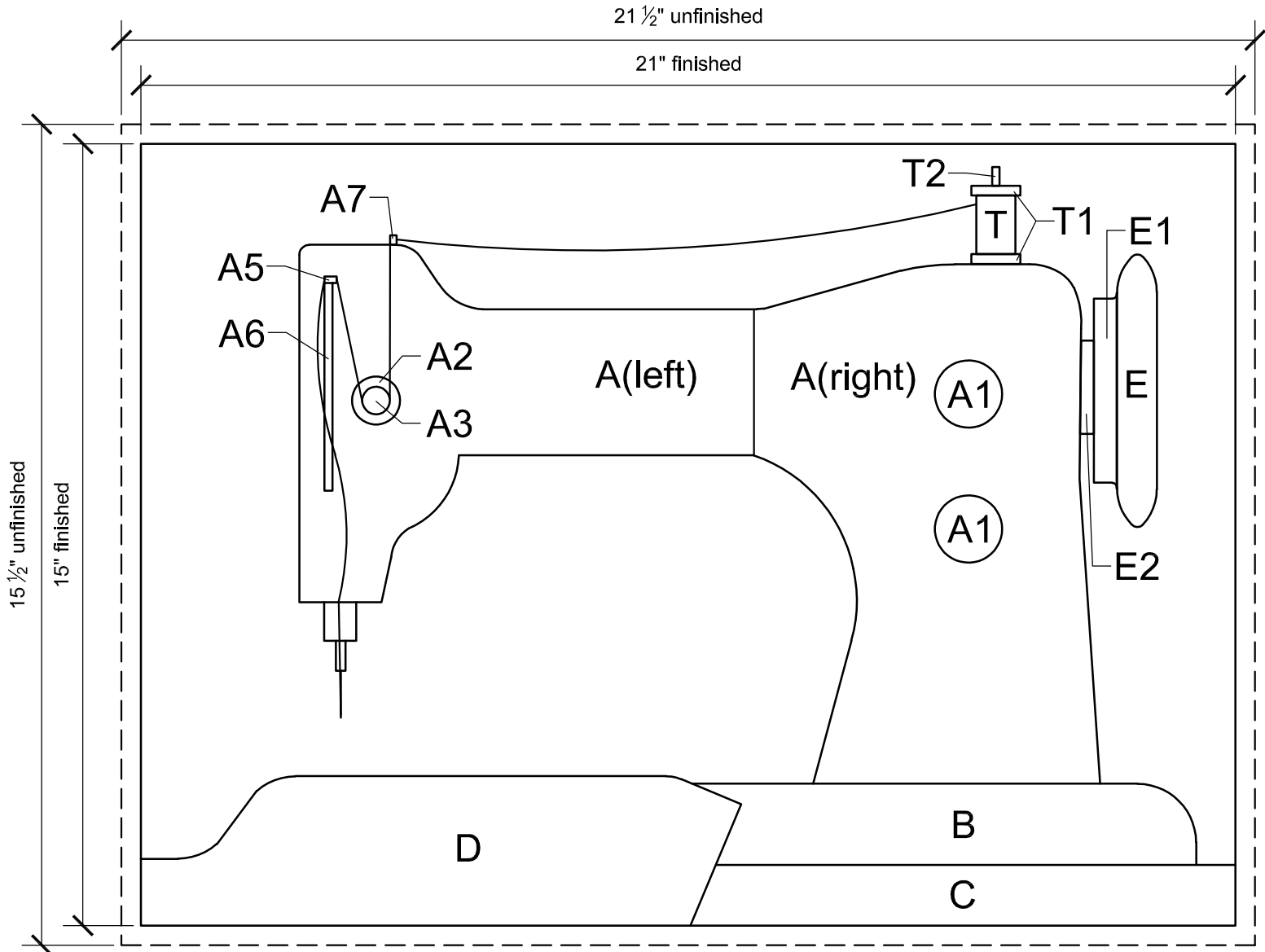
BOM MYSTERY QUILT 2019-2020

Month #8 - June

LARGE

Part 1- Sewing Machine Block (Appliqué)

- Cut (1) 15 1/2" x 21 1/2" background piece
- Use rotary cutter templates below and on next pages to cut out appliqué for Sewing Machine.
- Appliqué sewing machine pieces to background as shown using appliqué method of choice.

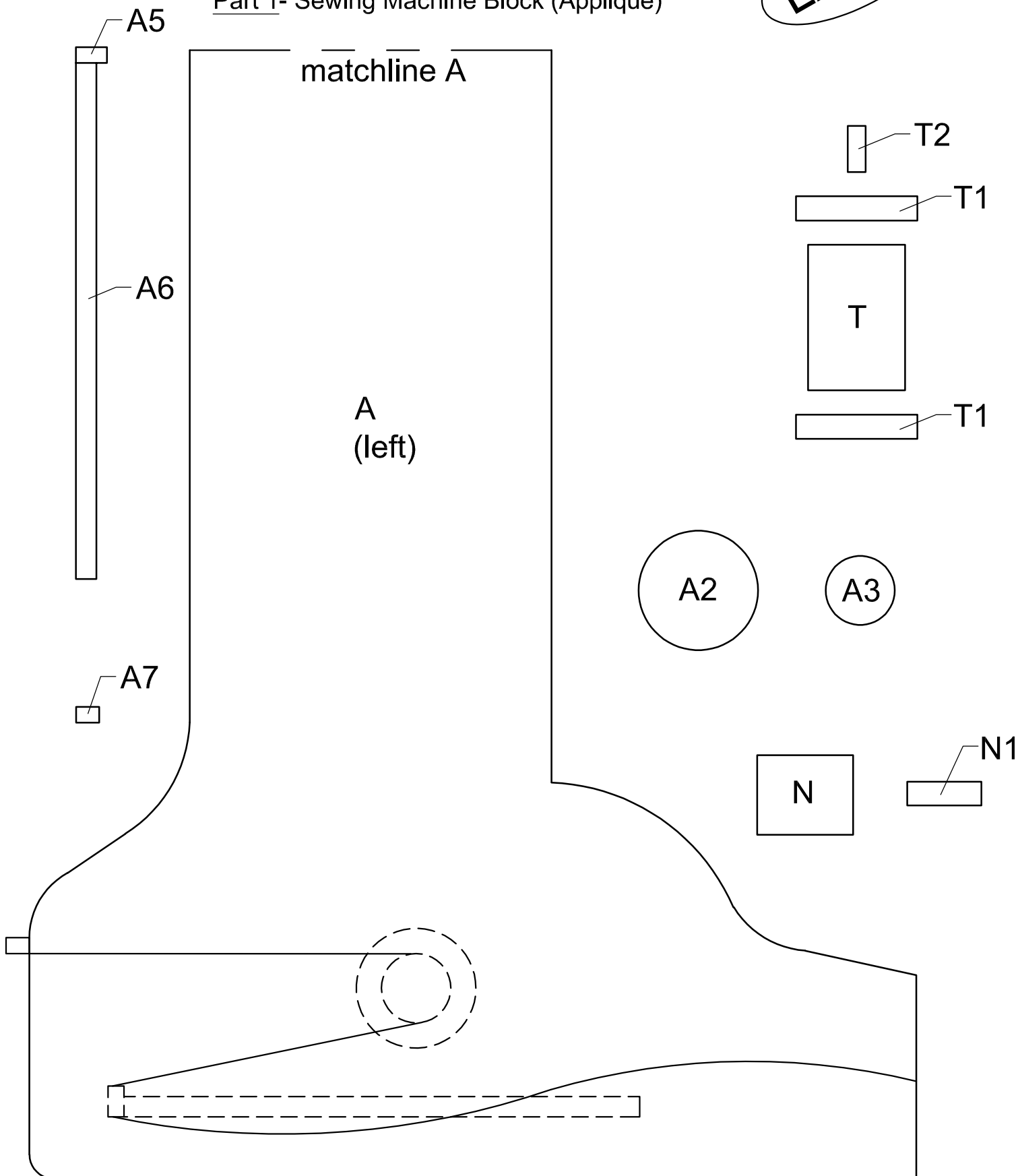


BOM MYSTERY QUILT 2019-2020

Month #8 - June

LARGE

Part 1- Sewing Machine Block (Appliqué)



BOM MYSTERY QUILT 2019-2020

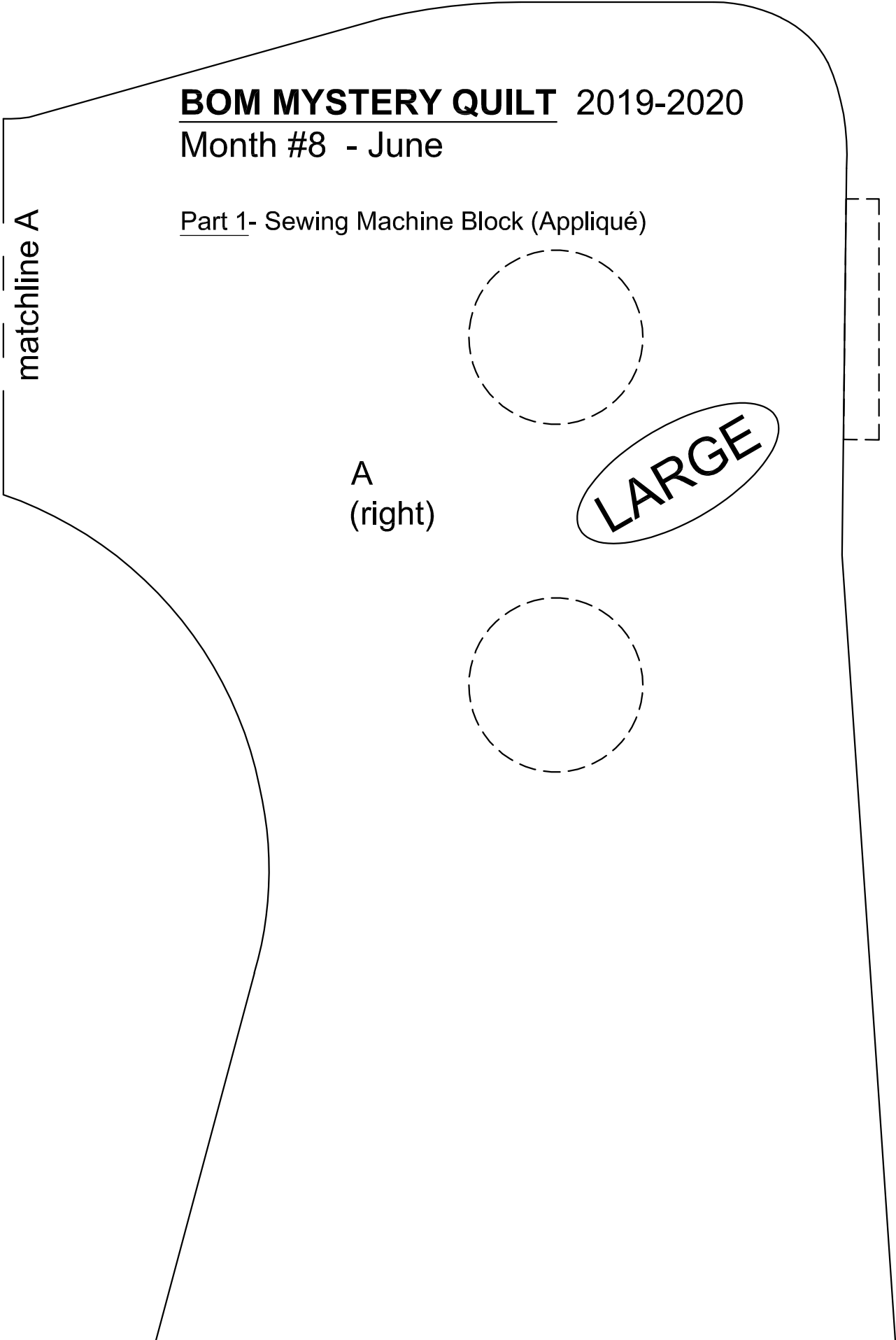
Month #8 - June

Part 1- Sewing Machine Block (Appliqué)

matchline A

A
(right)

LARGE

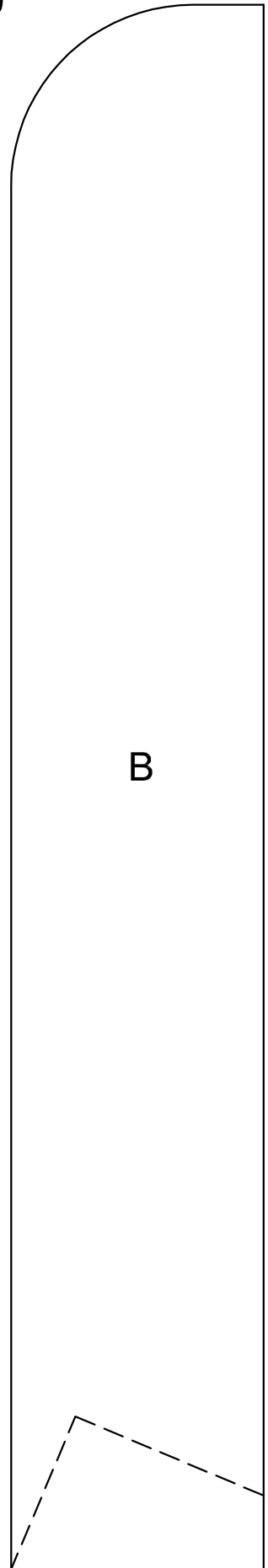
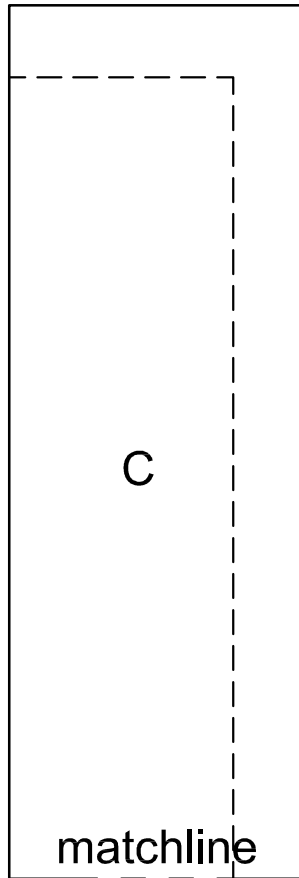
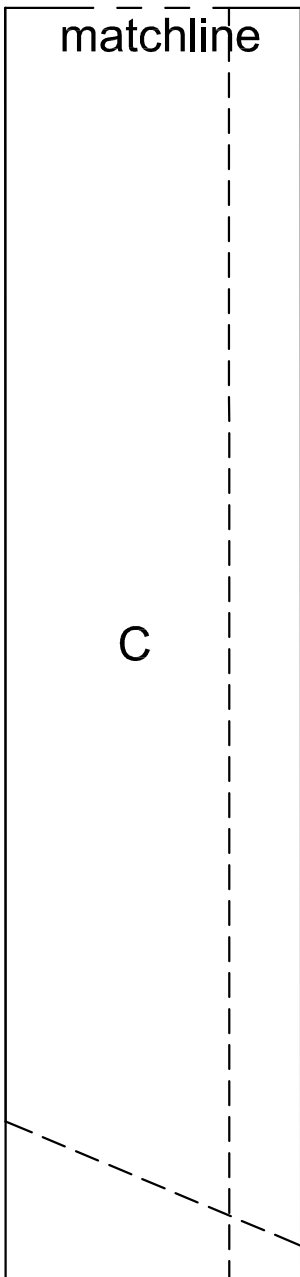


LARGE

BOM MYSTERY QUILT 2019-2020

Month #8 - June

Part 1- Sewing Machine Block (Appliqué)

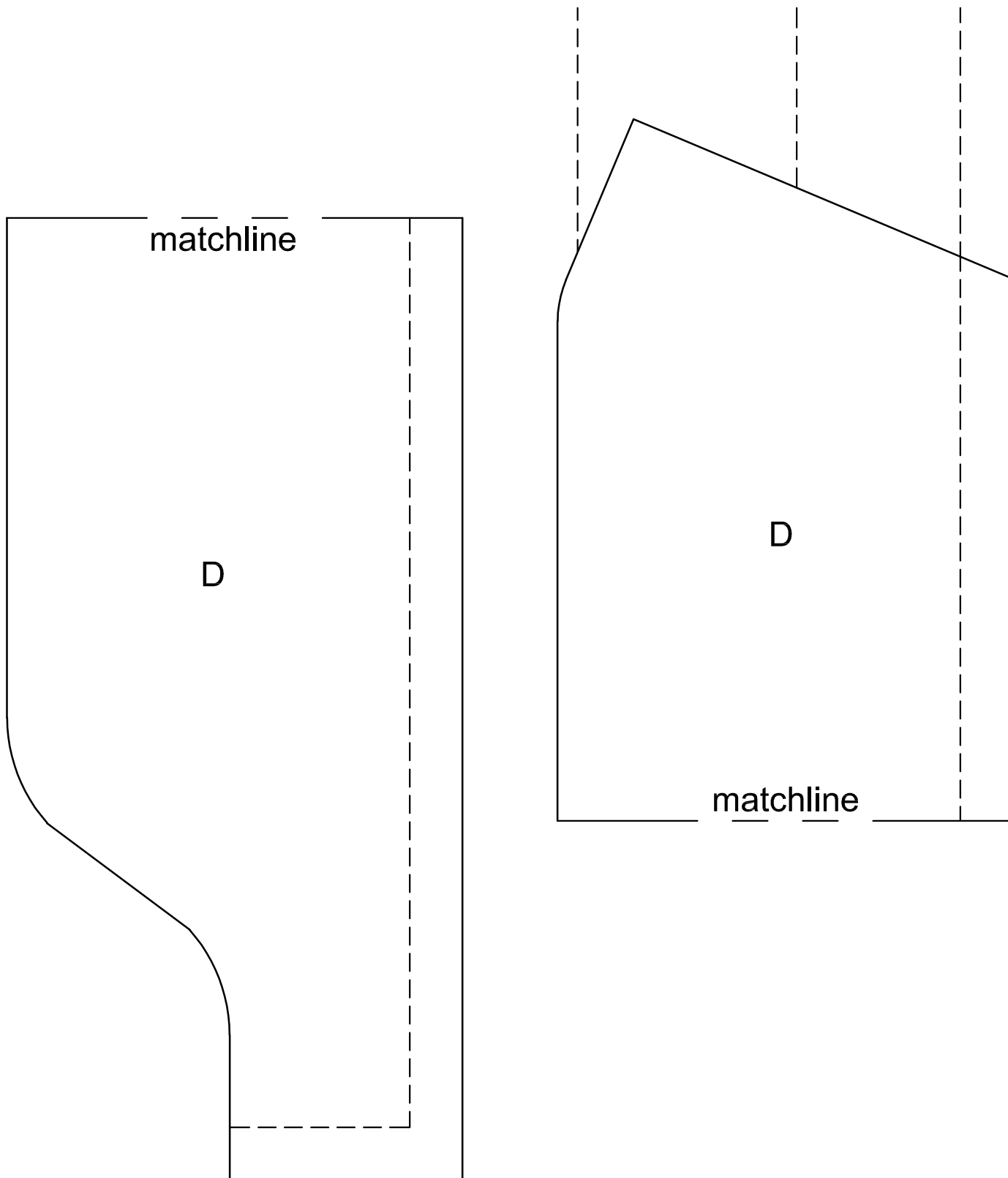


BOM MYSTERY QUILT 2019-2020

Month #8 - June

LARGE

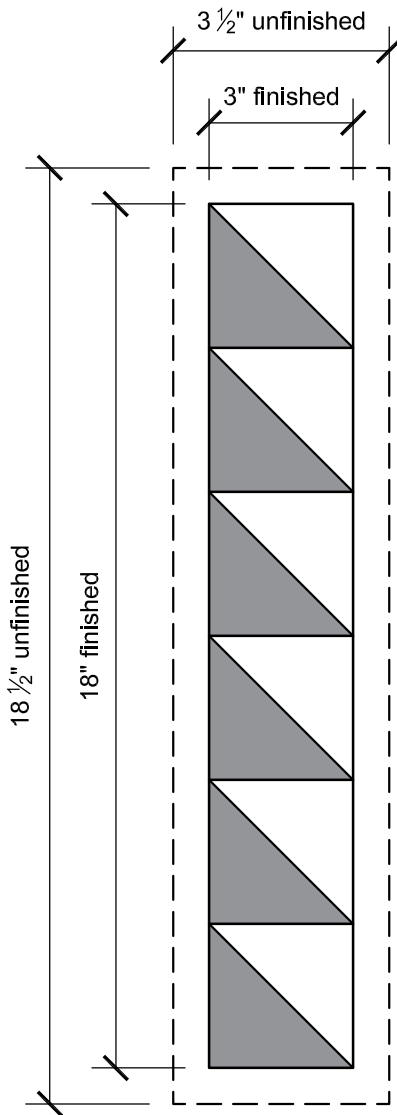
Part 1- Sewing Machine Block (Appliqué)



BOM MYSTERY QUILT 2019-2020

Month #3 - January

LARGE



Part 2 - Half-square Triangles

Make (13) half square triangles, each 3 1/2" x 3 1/2" unfinished (3" x 3" finished)

Sew (13) half square triangles together as shown, then sew to Sewing Machine block as shown.

